

INDOSUN

LED Street Light

ID-KIM



PT NAGARI SANTOSA
Komplek Nagoya Paradise Centre Blok J No.12,
Nagoya, Batam, Telp 0778 458417, Hp 0811698217
www.nagari-santosa.com



The Art of designing for light

The designer designed an elegant product with simple appearance and exquisite workmanship. Every detail is designed to bring power and lightness to its shape. This is a product with design, function and security.

Die cast aluminum material, hot-dip galvanizing, plastic spraying, good anti-corrosion performance;

Light controller can be installed to facilitate light control and other intelligent control.

The bat airfoil light distribution design is adopted to provide uniform light distribution

Stable performance, high luminous efficiency, low luminous attenuation, long service life,



Application Scene

Streets, paths and bike paths

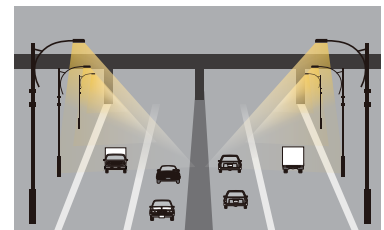
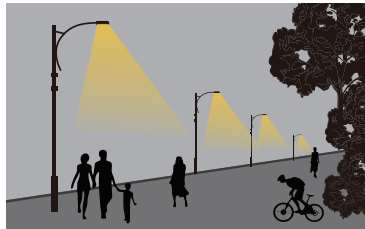
Residential streets

Shared zones, commercial

streets in urban areas

Rural roads, Urban roads

Motorways and ring roads



Optional Sockets



ZHAGA Socket



Shorting Cap



3Pin / 7Pin Receptacle



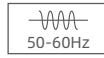
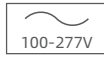
Photocell



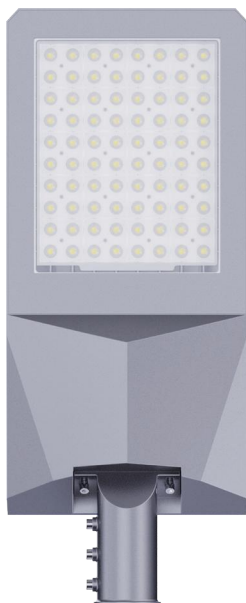
Vertical installation

Technical parameters

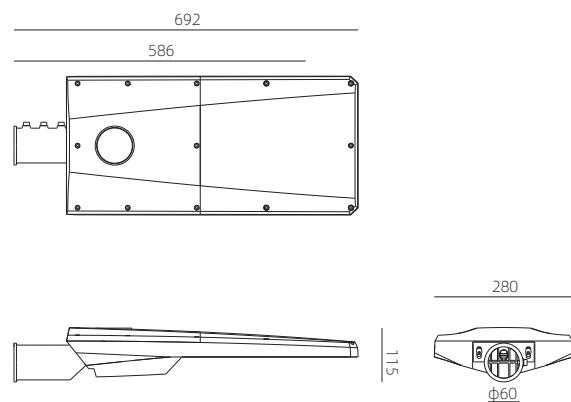
Model	ID-KIM
Power	100-200W
Luminaire efficiency	>170Lm
Type of light distribution	Bat Wing for light
Product dimensions	692 x 280 x 115mm
Installation Height	6-12m



Lamp Body



Product size

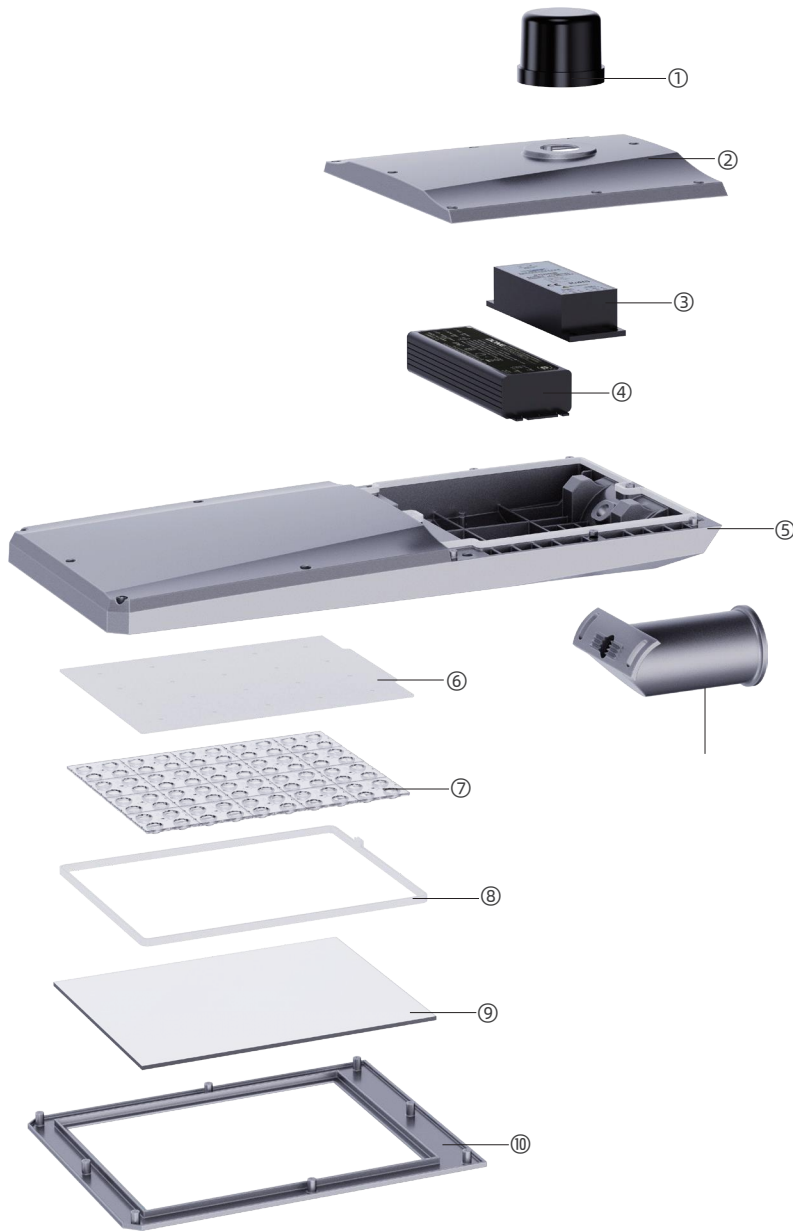


INDOSUN



005/006

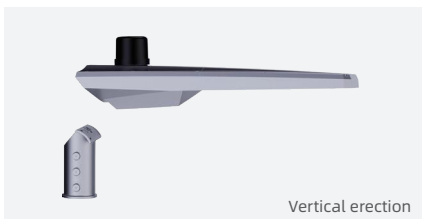
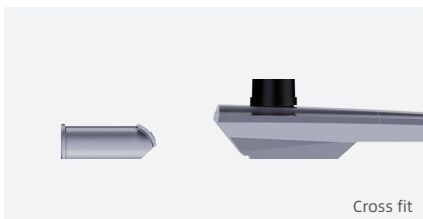
Structure Presentation



- ① Optical controller
 - ② Upper lamp cover
 - ③ Single lamp controller
 - ④ Power drive
 - ⑤ Main lamp body
 - ⑥ Light source plate
 - ⑦ Bat airfoil lens
 - ⑧ Reflector
 - ⑨ Ultrawhite glass
 - ⑩ Lower lamp cover
- Sleeve

- **Double sleeve installation mode**

The luminaire adopts horizontal and vertical installation, and supports angle adjustment, which can be adjusted according to different lighting environment to meet different lighting needs.



◎ Light controller can be installed optionally to facilitate light control and other intelligent control.

◎ Streamlined design, not easy to accumulate dust.

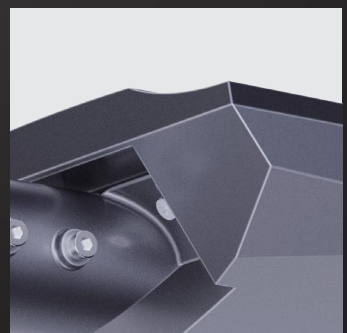
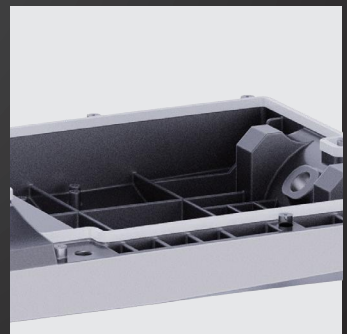
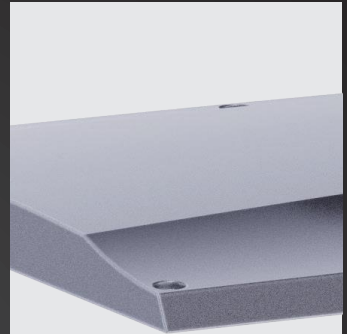
◎ Toughened protective glass cover

◎ Bat wing light distribution to achieve the best uniform lighting and improve the lighting effect.

◎ High efficiency single lamp controller

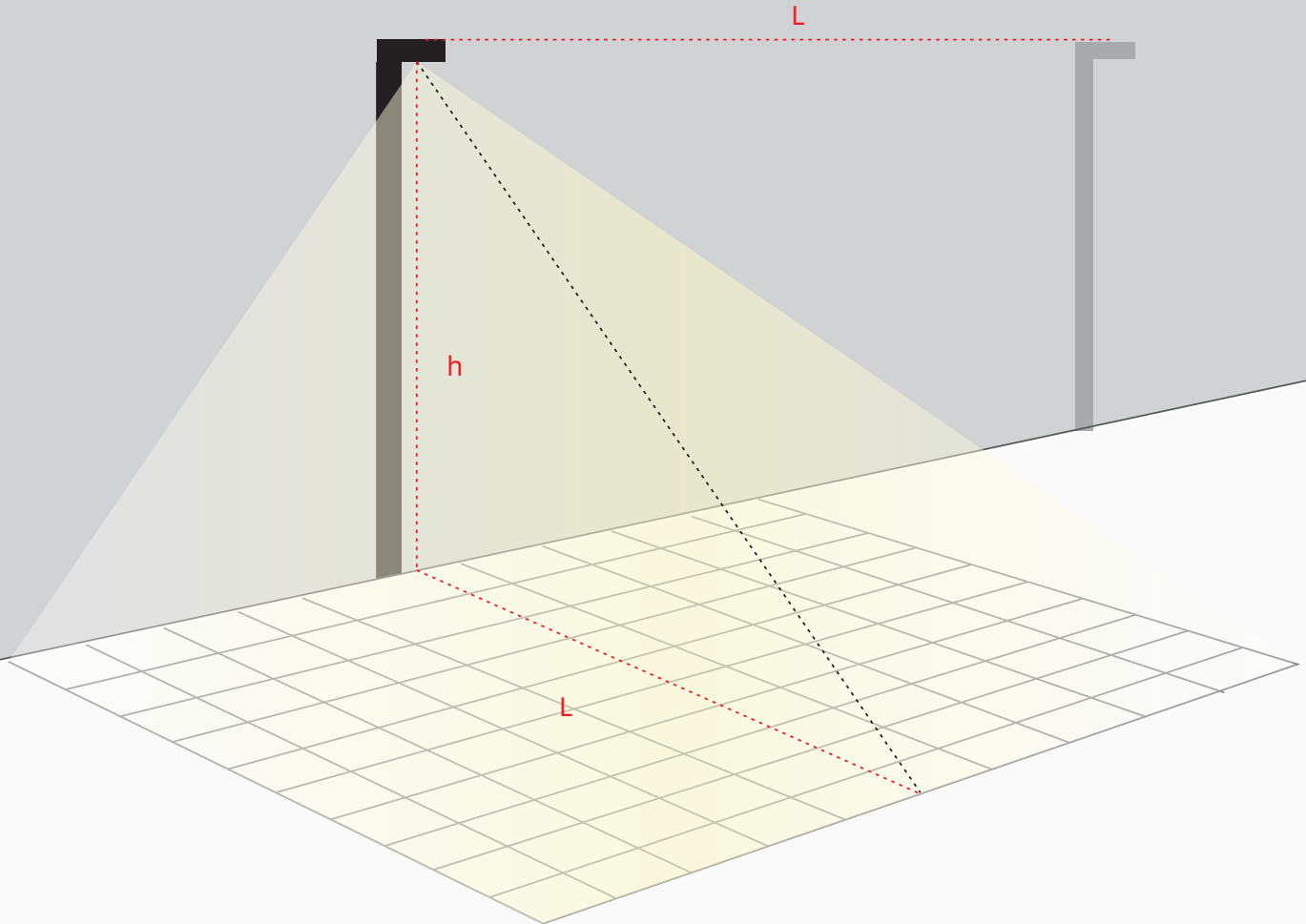
◎ Independent power supply compartment, convenient for maintenance.

◎ Gear design is adopted for lamp body sleeve, and the installation angle is adjustable



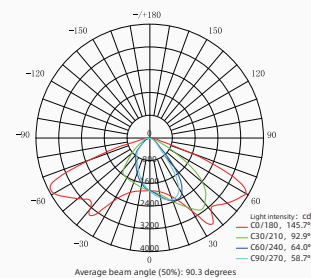
Light distribution display

The latest patented light source technology, through the lens special structure to achieve the light source to form a bat wing shape, to achieve the best uniform illumination, improve the lighting effect.

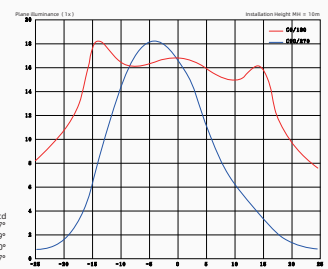


D = Distance to height ratio (L/h)
 h = height of light pole
 l = light pole distance
 L = width of lighting area

Light distribution curve of meridional plane



Plane illuminance curve



Grid: 10x6 spot
 Average illuminance 11.8(lx) Minimum illumination 8.1(lx) Maximum illumination 15.7(lx) Average illuminance 0.42(lx)
 Unit: Lux, scale 1:151

INDOSUN



009/010

intelligent controller



Control options

From simple factory-set dimming to full CMS: enhance your luminaire through intelligent, connected sensors and control systems.

Benefits of smart control

- Reduced energy consumption
- Reduced carbon footprint
- Longer luminaire life
- Lower capital, maintenance and energy costs
- Ability to collect data



Bluetooth

For on/off switching, light control and dimming



Smart control

Integral CMS: connected (or Smart) assets which use wireless communications networks, offering optimal flexibility. Control a single luminaire or group switch remotely.



Simple, stand-alone controls

Factory-set dimming, time switches, photocells and presence detectors. Control in its simplest form.

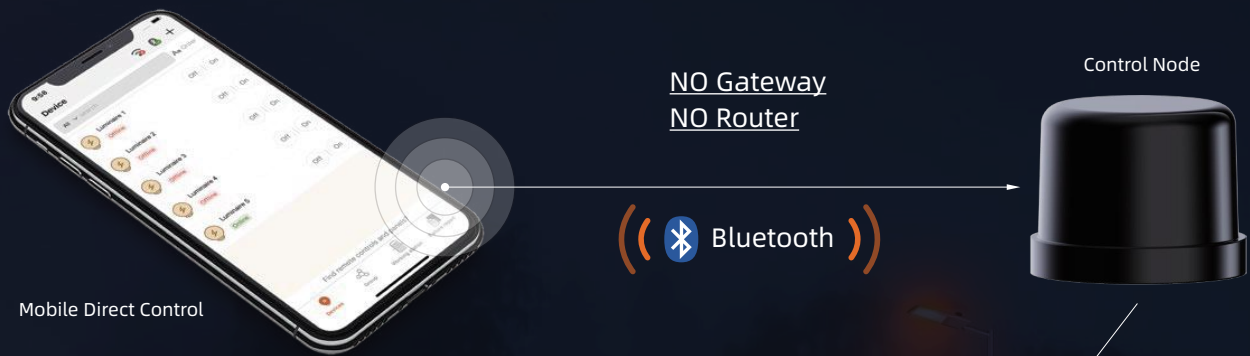
Traffic

Environmental monitoring

Traffic management

City management

The lamps can be equipped with smart components and configured as smart street lamps, integrating transportation, environmental monitoring, energy management, city management and other hardware functions, which can be widely distributed to all corners of the city to help the construction of smart cities.

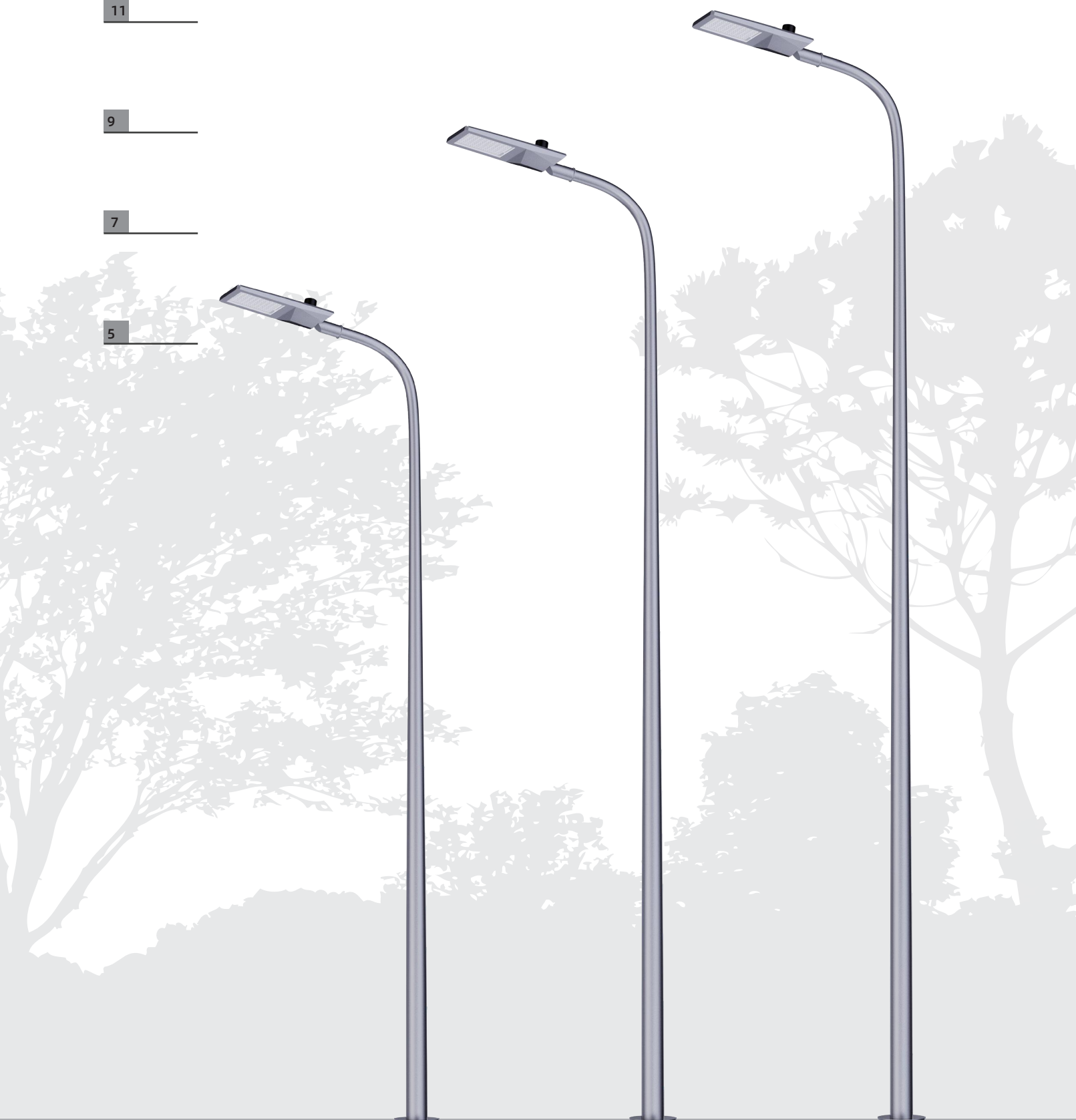


11

9

7

5



INDOSUN